

engineers | developers | contractors
USHIKA ENDEAVOUR PVT. LTD.

come and realise your dreams with us



DEVELOPED BY: **USHIKA ENDEAVOUR PVT. LTD.**

FLAT NO. 402, BANALIKA APARTMENT
1297 Survey Park, Santoshpur,
Kolkata - 700075

Email : ushikaendeavour@gmail.com

USHIKA *Prothoma*

43a, mukundapur | kolkata- 700 099



SPECIFICATIONS

FLOORING

- Vitrified (Inside Individual Tenements)
- Green/White Marble (Staircase Block)
- Interlocking pavers block or equivalent (Parking and in ground floor)
- Terrazzo flooring on roof after proper waterproofing treatment.

PLUMBING

- CPVC/UPVC (Supreme/Parryware for all hot/cold water lines; necessary gauge and thickness)
- P.V.C (Oriplast/Supreme/Parryware for other lines; necessary gauge and thickness)
- Fittings (Jaquar (Continental Series), Hindware or equivalent)

ELECTRICAL

- Wires (Havells, Finolex, Poly cab or equivalent of necessary gauge; Copper)
- Switches and Sockets (Modular; White colour)

KITCHEN

- Granite Topping (Black colour)
- Stainless Steel Sink

TILES

- 2100 mm dado height; Kajaria, Johnson, Nitco or equivalent)

DOORS

- Main Door (Both side laminate finish with Godrej lock; peeping hole,)
- Remaining doors (Both side laminate finish with necessary hardware all complete)

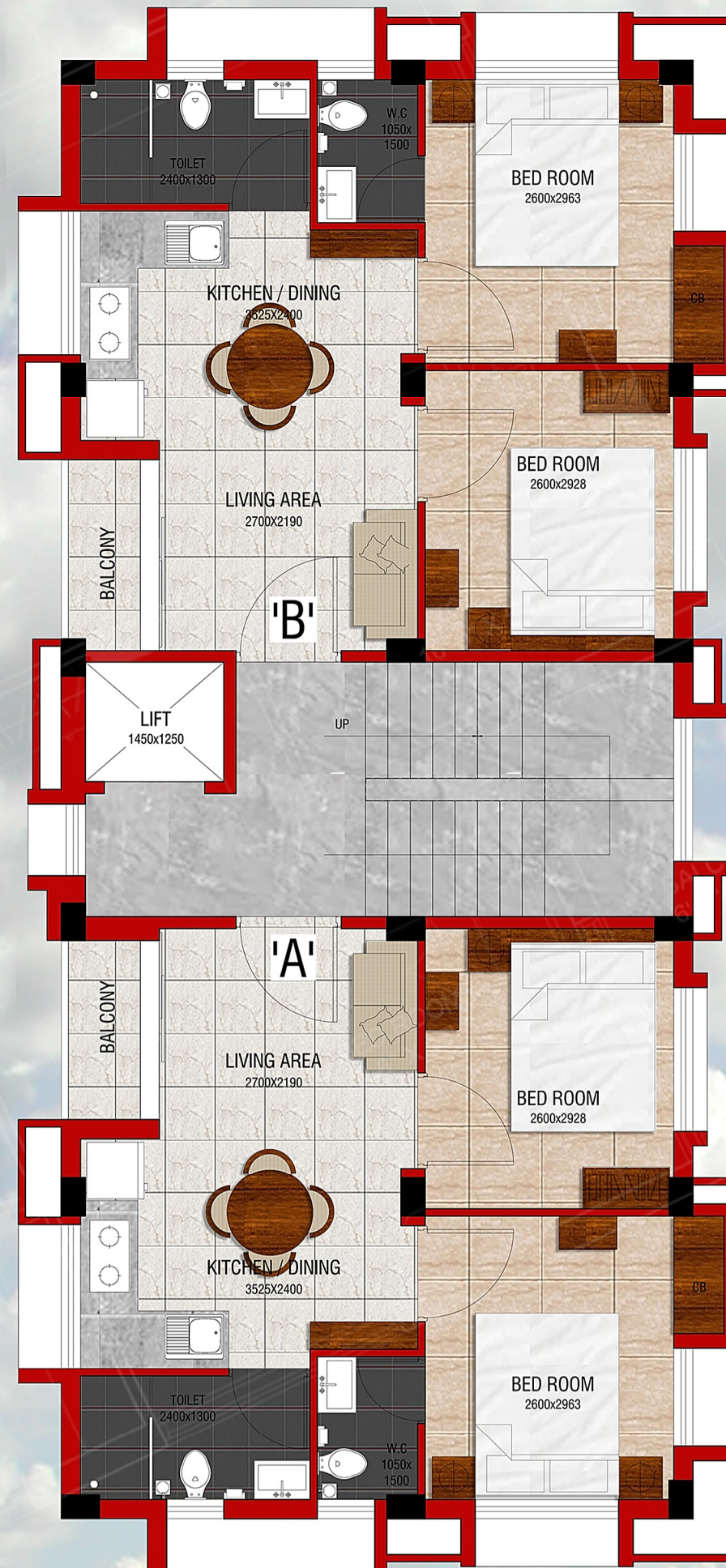
WINDOWS

- Aluminium Sliding of Jindal/Indal make with 1.2 mm gauge

LIFT

- (L.E.S, LASER or equivalent ; 5 Passenger)

TYPICAL FLOOR PLAN not to scale



SUPER BUILT UP AREA:
TYPE A: 748 SFT
TYPE B: 748 SFT

GROUND FLOOR PLAN not to scale

